

Ueno Sightseeing Map

- 1 Tokyo National University of Fine Arts and Music / University Art Museum
- 2 Tokyo National University of Fine Arts and Music / Sogakudo Concert Hall
- 3 The International Library of Children's Literature
- 4 Sogakudo Hall
- 5 Tokyo National Museum
- 6 Tokyo Metropolitan Art Museum
- 7 Statue of Doctor A F Baudwan
- 8 National Science Museum
- 9 National Western Art Museum
- 10 Statue of Doctor Noguchi Hideyo
- 11 Monument indicating the tree that General Grant planted
- 12 Ueno Zoological Garden Entrance
- 13 Five-storied pagoda of former Kaneiji Temple
- 14 Ueno Tōshōgū Shrine
- 15 Great Buddha at Ueno (Face only)
- 16 Tokyo Metropolitan Festival Hall
- 17 The Ueno Royal Museum
- 18 Kiyomizu Kannondō Temple
- 19 Gojo Tenjin Shrine
- 20 Yokoyama Taikan Memorial Hall
- 21 Old Residence of Iwasaki family
- 22 Shitamachi Museum
- 23 Bronze statue of Saigō Takamori
- 24 Keisei Line Ueno Sta.

- A Motorcycle shop district
- B Household shrine and altar wholesale district
- C Ameyoko
- D Precious metal and jewelry wholesale district
- E Kimchi Alley
- F Kappabashi kitchen utensils district (300m ahead)



Ueno Sightseeing Spots



Tokyo National Museum

Located on the top of a hill in Ueno, this building is one of the largest of its kind. It contains some 90,000 archeological relics and artistic handicrafts. Closed every Monday.
Tel: 03-3822-1111



General Grant Monument tree

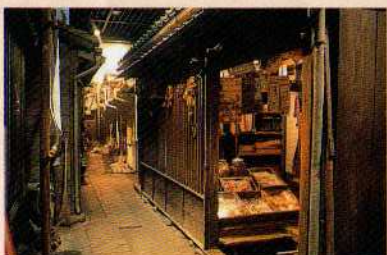
Grant, the 18th president of the United States of America, visited Japan in 1879. The sapling that he planted to commemorate his visit has grown into a large tree.

Tokyo Metropolitan Art Museum

Famous for public entry exhibitions, such as Nitten Exhibition, Nika-ten Exhibition and Inten Exhibition. The museum includes a small library of some 30,000 books devoted to art. Closed every third Monday.
Tel: 03-3823-6921

National Science Museum

Japan's only National Science Museum. The "Exploration Hall" and the "Science Theater" are very popular. Closed every Monday.
Tel: 03-3822-0111



Shitamachi Museum

Opened in 1980 by Taito-ku for the purposes of preserving and exhibiting customs and culture, and handing them down for posterity.
Tel: 03-3823-7451

SOGAKUDO

Taito-ku has preserved the concert hall of the former Tokyo School of Music. It contains Japan's first full-scale pipe organ. Closed every Monday.
Tel: 03-3824-1988

Ueno Toshogu Shrine

This shrine reveres Tokugawa Ieyasu. It was built by Todo Takatora in 1627. The Myojin torii, the stone lanterns leading to the shrine, and the Kara-mon are famous.

Tokyo National Western Art Museum

Exhibits many western works of art, based on the Matsukata collection. Closed every Monday.
Tel: 03-3828-5131

The Ueno Royal Museum

Ever since it was opened in 1972, this museum has held many international and theme exhibitions.
Tel: 03-3833-4191

Tokyo National University of Fine Arts and Music/ Concert Hall

Equipped with a pipe organ, morning concerts and regular performances are held.
Tel: 03-5685-7700

Tokyo National University of Fine Arts and Music / University Art Museum

Contains some 40,000 art objects including national treasures and important cultural assets. Closed every Monday.
Tel: 03-5685-7755

The International Library of Children's Literature

This is the only national library in Japan devoted to children's books. At present, it is partially open, and is scheduled to be fully open in 2002. Closed every Monday.
Tel: 03-3827-2053

Yokoyama Taikan Memorial Hall

Yokoyama Taikan, a great master in the Japanese painting world, lived here from 1900 until his death at age 90 in 1958.



Motorcycle shop district

There are about 80 motorcycle shops along Showa Dori between Ueno and Iriya.

Kimuchi alley

About a one minute walk to the south-east of Ueno Station. Here, you can enjoy real Korean dishes such as Korean B.B.Q.. There are also many Korean foodstuff shops that sell kimuchi, spices and so on.



Household shrine and altar district

For 1 km along Asakusa dori there are wholesale and retail shops that sell household shrines and altars.



Precious metal and jewelry district

There are wholesalers of precious metals and jewelry on the east side of JR Okachimachi Station.



Ueno Sightseeing Calender

January 1~End of February:

Winter peony exhibition... Held in the grounds of the Ueno Toshogu Shrine. Here, brilliant peonies are on display.

January 24 and 25:

"Usokae" shinto ritual ... A ritual in which bullfinch fish (uso) made of cypress wood are exchanged. Held at the Gojo Tenjin Shrine.

February 3:

"Ukera" shinto ritual ... A ritual celebrating the coming of spring, held at the Gojo Tenjin Shrine.

End of March~beginning of April:

Ueno cherry blossom festival ... There are about 1300 cherry blossom trees in Ueno Park. You can also enjoy cherry blossom viewing at night.

Mid-April~Mid-May:

Ueno peony festival ... There are about 3500 peony plants in the grounds of the Ueno Toshogu Shrine.

Beginning of May:

Shitaya big shrine festival ... Every second year a large portable shrine is paraded through the streets of the town.

May 25:

Gojo Tenjin festival ... Every second year a large portable shrine is paraded in the streets.

June 1~7

Azalea Festival ... About 300 Satsuki azaleas in full bloom are arranged along the banks of Shinobazu Pond.

Mid-July~Beginning of August:

Ueno summer festival ... A plant market and an antique market are held on the banks of Shinobazu Pond. Also, various music events, on a floating concert hall and variety shows are held.

End of July:

Ueno summer festival parade ... A lively parade held on Ueno's Chuo Dori. This parade includes festivals from regions all over Japan, as well as the Tokyo Sansa dance parade.

September (August 15 on the old calendar):

Hechima (loofah) memorial service ... Held at the Jomyoin Temple in Sakuragi-Cho of Ueno. Effective for coughs and asthma.

December 31:

Watch-night bells on New Year's eve ... In Ueno, the bell of Kaneiji temple is rung 108 times.

Issued by

Tourist Section Taito-Ku
5-6, 4-Chome, Ueno, Taito-Ku, Tokyo
Zip code:110-8615
Tel: 03-5246-1111

R250
AMINO BROS. CO., LTD.